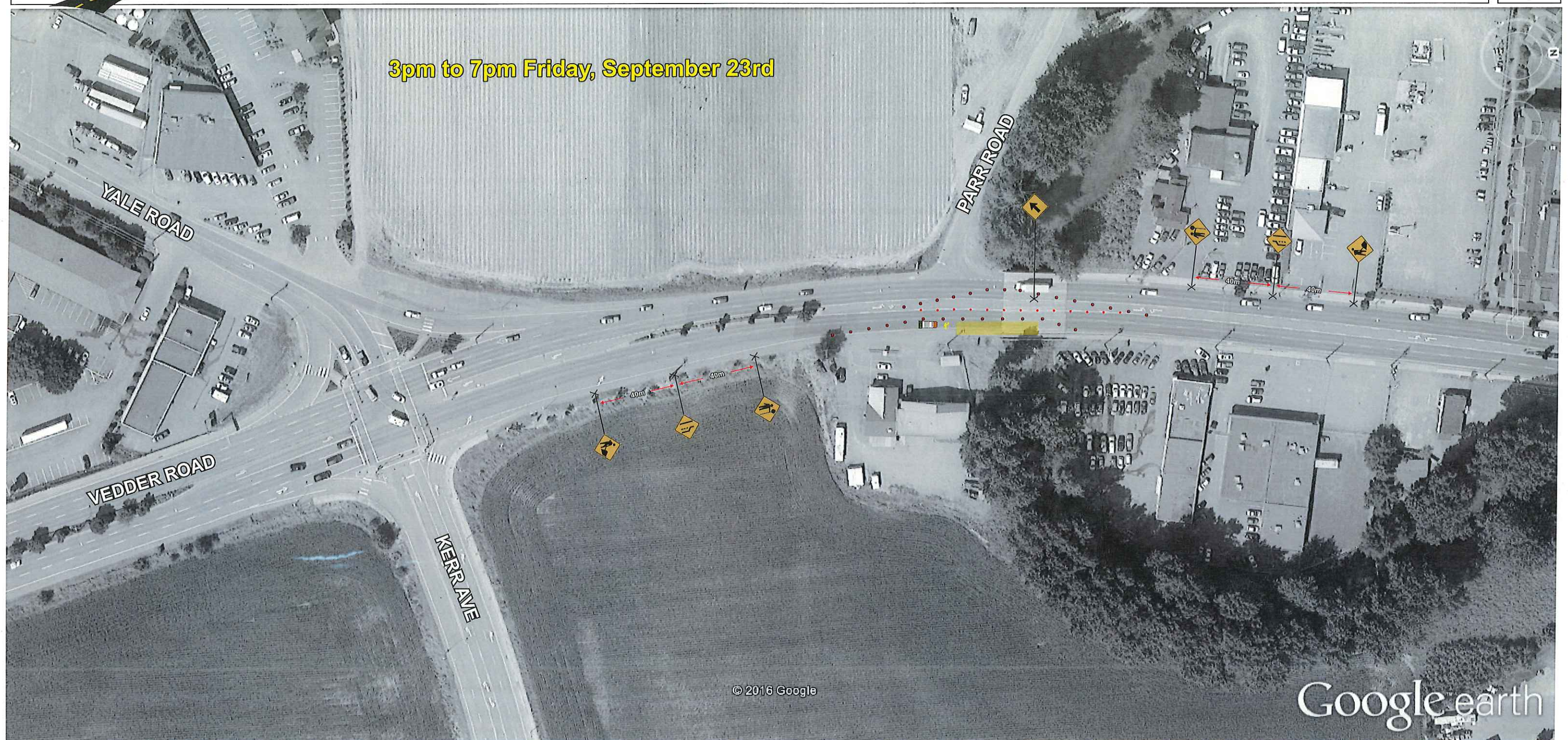


3pm to 7pm Friday, September 23rd



© 2016 Google

Google earth

Contractor Name:	SHEET #	
Strohmaier's Excavating	Sheet 1 of 3	
Job Description:	Date:	
Bridge Repair	3pm - 7pm Friday, Sept. 23rd	
Contractor Contact:	Phone:	Email:
Traffic Supervisor Contact:	Phone:	Email:
Angelia Fox	604-858-7730	Angelia@StreetwiseTraffic.ca
Traffic Plan Contact:	Phone:	Email:
Tehjay Fox	604-799-6750	Tehjay@StreetwiseTraffic.ca

LEGEND

	TRAFFIC CONTROL PERSONNEL		TRAFFIC BARREL
	SIGN STAND (TRIPOD)		TUBULAR MARKER - TYPE D
	SIGN STAND (WINDMASTER)		TRAFFIC CONTROL VEHICLE
	SIGN FLAGS		FLASHING ARROW BOARD (FAB)
	CLASS 1 BARRICADE		EXISTING BUS STOP CLOSED
	WORKZONE		RELOCATED BUS STOP

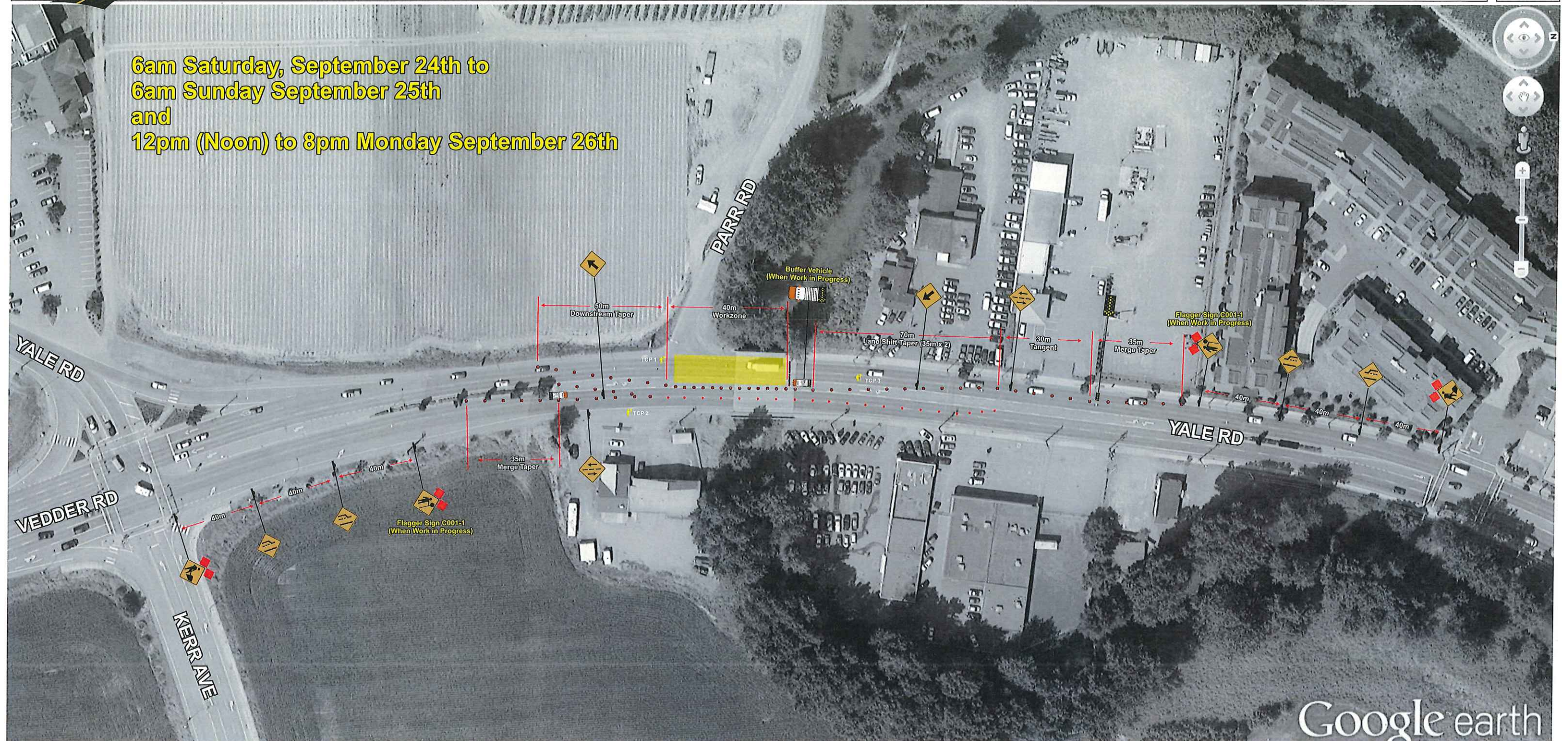
DRAWING SPECIFIC NOTES

- TCP will assist motorists in and out of businesses.
- TCP will facilitate work vehicles entering and exiting workzone.

GENERAL NOTES

- All traffic control shall conform to the TCM and the latest catalogue for Standard Traffic Signs
- Signs shown are representations of signs only and the MOTI Construction Sign Catalogue should be used for detailed sign design
- Dimensions shown are in meters and are the minimums except as otherwise indicated
- All permanent signage that will conflict with this site will be covered or removed while the works are in effect
- Active Work Zones and Hazards shall be delineated to protect workers and the travelling public
- Maximum distance between cone/delineator/barrel should be 10m
- Tubular markers and signs will be double based and well secured during windy conditions
- Distances may be adjusted due to urban block length
- These pages are best printed on a Tabloid (11x17) page size

**6am Saturday, September 24th to
6am Sunday September 25th
and
12pm (Noon) to 8pm Monday September 26th**



Google earth

Contractor Name:	SHEET #	
Strohmaier's Excavating	Sheet 2 of 3	
Job Description:	Date:	
Bridge Repair	6am Sat. Sept. 24th to 6am Sun. Sept 25th	
	12pm Mon. Sept. 26th to 8pm Mon. Sept 26th	
Traffic Supervisor Contact:	Phone:	Email:
Angelia Fox	604-858-7730	Angelia@StreetwiseTraffic.ca
Traffic Plan Contact:	Phone:	Email:
Tehjay Fox	604-799-6750	Tehjay@StreetwiseTraffic.ca

LEGEND

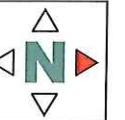
	TRAFFIC CONTROL PERSONNEL		TRAFFIC BARREL
	SIGN STAND (TRIPOD)		TUBULAR MARKER - TYPE D
	SIGN STAND (WINDMASTER)		TRAFFIC CONTROL VEHICLE
	SIGN FLAGS		FLASHING ARROW BOARD (FAB)
	CLASS 1 BARRICADE		EXISTING BUS STOP CLOSED
	WORKZONE		RELOCATED BUS STOP

DRAWING SPECIFIC NOTES

- TCP 1 will assist motorists in and out of Parr Road, facilitate work vehicles entering/leaving the workzone and maintain equipment
- TCP 2 will assist motorists in and out of the business, facilitate work vehicles entering/leaving the workzone and maintain equipment.
- TCP 3 will assist motorists in and out of the businesses, facilitate work vehicles entering/leaving the workzone and maintain equipment.
- Barrel Flashers will be used on Tapers during nighttime hours.
- Tubular Markers will be "Double Based" to prevent being blown/knocked over.

GENERAL NOTES

- All traffic control shall conform to the TCM and the latest catalogue for Standard Traffic Signs
- Signs shown are representations of signs only and the MOTI Construction Sign Catalogue should be used for detailed sign design
- Dimensions shown are in meters and are the minimums except as otherwise indicated
- All permanent signage that will conflict with this site will be covered or removed while the works are in effect
- Active Work Zones and Hazards shall be delineated to protect workers and the travelling public
- Maximum distance between cone/delineator/barrel should be 10m
- Tubular markers and signs will be double based and well secured during windy conditions
- Distances may be adjusted due to urban block length
- These pages are best printed on a Tabloid (11x17) page size



Contractor Name:	SHEET #	
Strohmaier's Excavating	Sheet 3 of 3	
Job Description:	Date:	
Bridge Repair	6am Sun. Sept. 25th to 12pm Mon. Sept 26th	
Contractor Contact:	Phone:	Email:
Traffic Supervisor Contact:	Phone:	Email:
Angelia Fox	604-858-7730	Angelia@StreetwiseTraffic.ca
Traffic Plan Contact:	Phone:	Email:
Tehjay Fox	604-799-6750	Tehjay@StreetwiseTraffic.ca

LEGEND

	TRAFFIC CONTROL PERSONNEL		TRAFFIC BARREL
	SIGN STAND (TRIPOD)		TUBULAR MARKER - TYPE D
	SIGN STAND (WINDMASTER)		TRAFFIC CONTROL VEHICLE
	SIGN FLAGS		FLASHING ARROW BOARD (FAB)
	CLASS 1 BARRICADE		EXISTING BUS STOP CLOSED
	WORKZONE		RELOCATED BUS STOP

DRAWING SPECIFIC NOTES

- TCP 1 will assist motorists in and out of Parr Road and maintain equipment
- TCP 2 will assist motorists in and out of the business, facilitate work vehicles entering/leaving the workzone and maintain equipment.
- TCP 3 will assist motorists in and out of the business, facilitate work vehicles entering/leaving the workzone and maintain equipment.
- Barrel Flashers will be used on Tapers at night.
- Tubular Markers will be "Double Based" to prevent being blown/knocked over.

GENERAL NOTES

- All traffic control shall conform to the TCM and the latest catalogue for Standard Traffic Signs
- Signs shown are representations of signs only and the MOTI Construction Sign Catalogue should be used for detailed sign design
- Dimensions shown are in meters and are the minimums except as otherwise indicated
- All permanent signage that will conflict with this site will be covered or removed while the works are in effect
- Active Work Zones and Hazards shall be delineated to protect workers and the travelling public
- Maximum distance between cone/delineator/barrel should be 10m
- Tubular markers and signs will be double based and well secured during windy conditions
- These pages are best printed on a Tabloid (11x17) page size